



EYEMAX

SINGLE-USE VIDEO CHOLANGIOPANCREATICOSCOPY





EYEMAX SINGLE-USE VIDEO CHOLANGIOPANCREATICOSCOPY

DIRECT VISUALISATION FOR THE DIAGNOSIS AND TREATMENT IN ENDOSCOPIC SURGERY

- Reliable, low-risk procedure for the diagnosis and treatment of acute or chronic biliary tract and pancreatic diseases
- Reduced radiation exposure compared to standard ERCP
- High image resolution enables more precision in the diagnosis, biopsy and treatment of stones, stenoses, infections and tumors
- Compatible with all common EHL devices

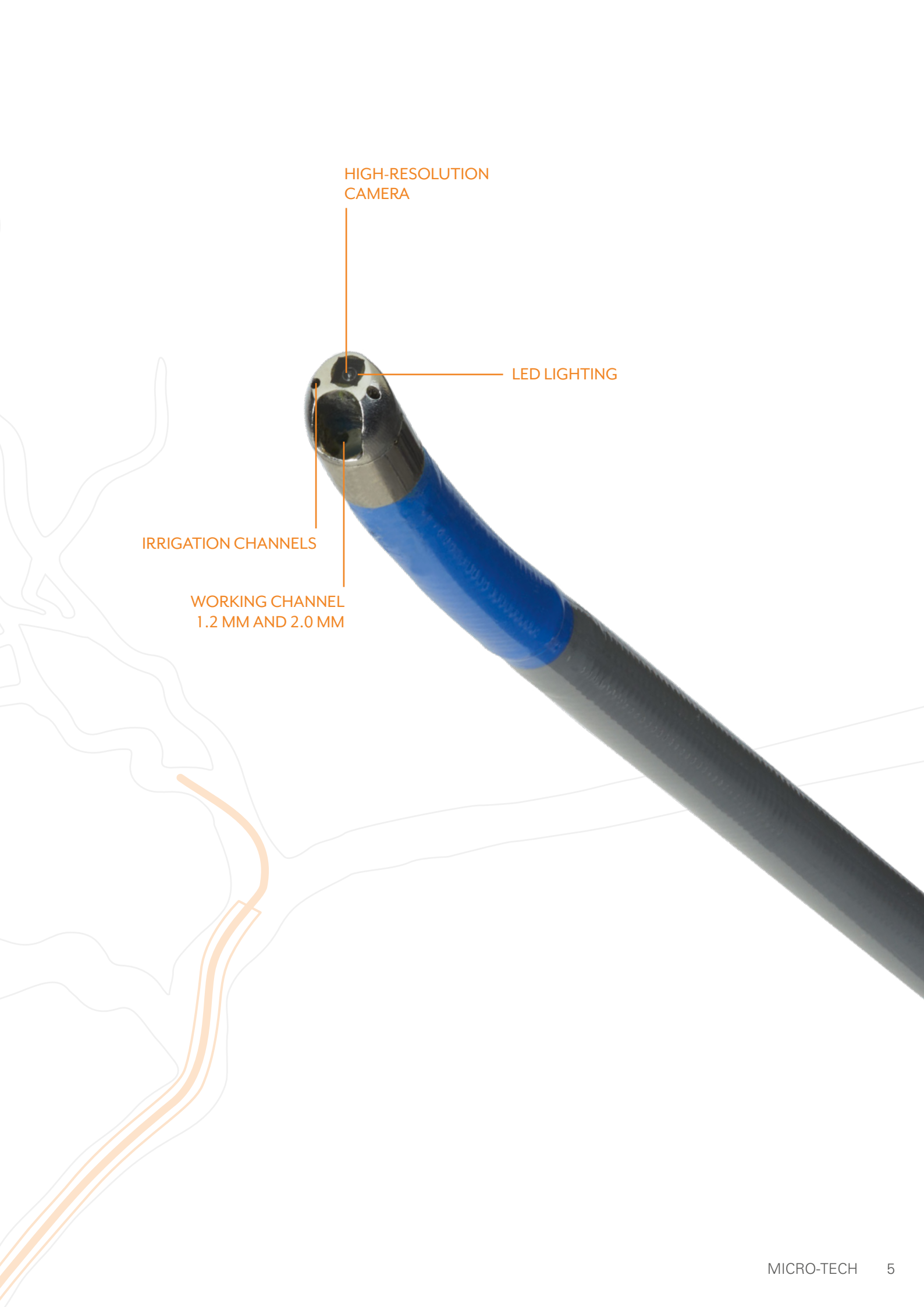


CHOLANGIOSCOPES

HIGH RESOLUTION, 120° ANGLE OF VIEW

- Improved sampling, suction and retraction of foreign bodies
- Best visualisation for efficient stone and tissue treatment
- Narrow external diameter for easier passage of stenoses and less traumatic insertion





HIGH-RESOLUTION
CAMERA

LED LIGHTING

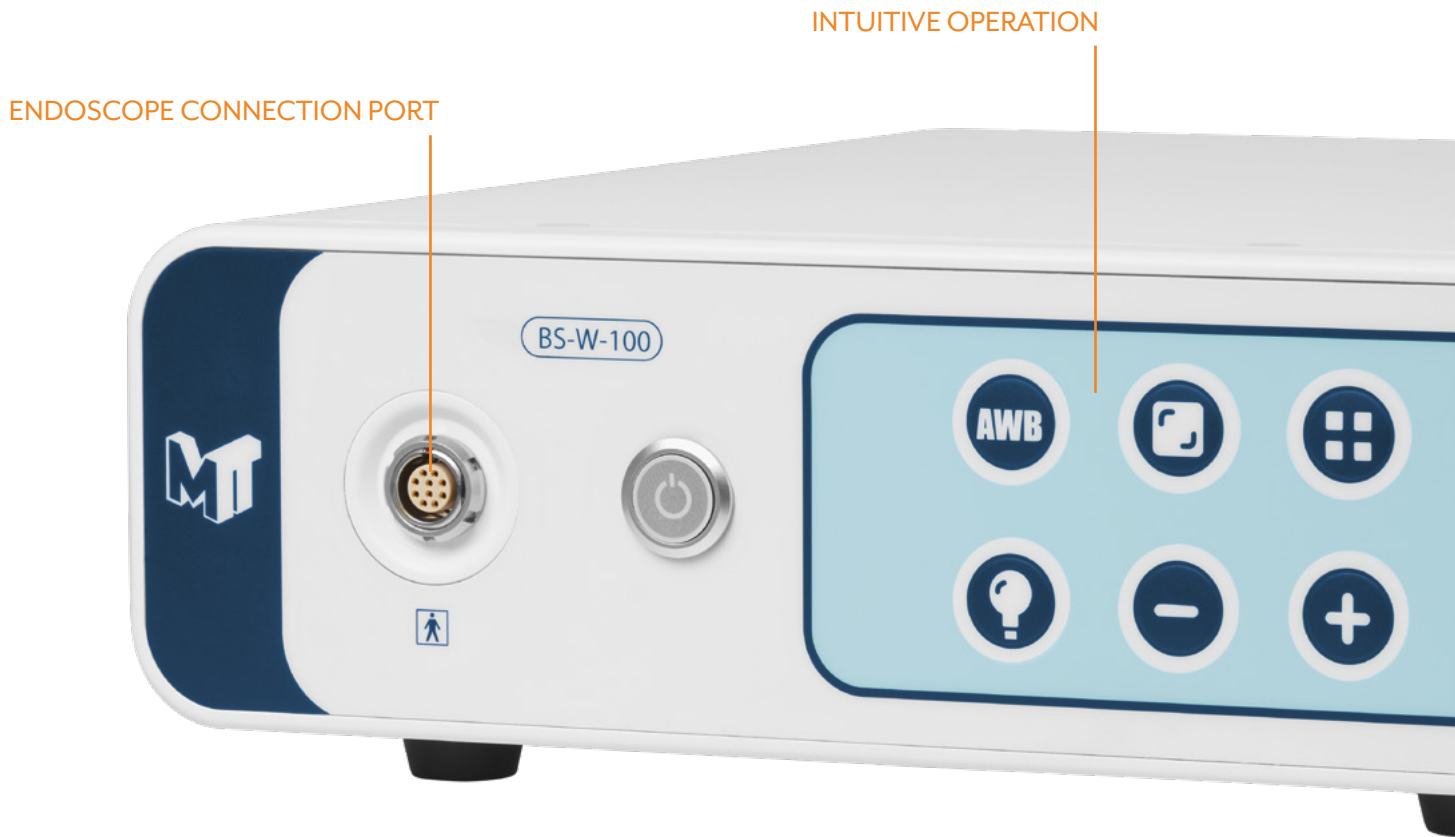
IRRIGATION CHANNELS

WORKING CHANNEL
1.2 MM AND 2.0 MM



ACCESS TO THE WORKING
CHANNEL WITH LUER-LOCK
CONNECTION

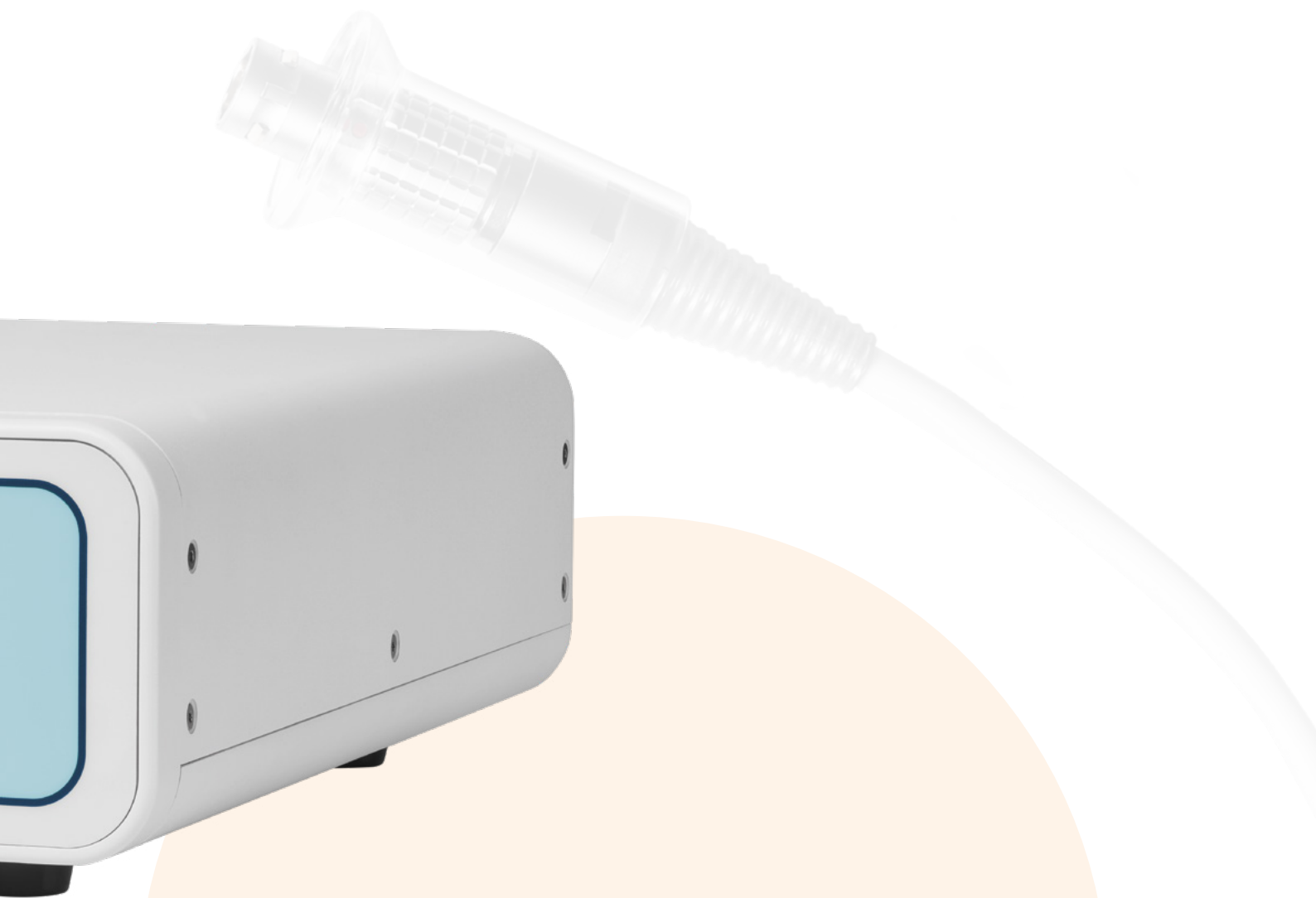




HIGH-PERFORMANCE PROCESSOR

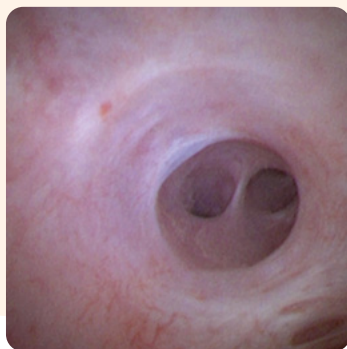
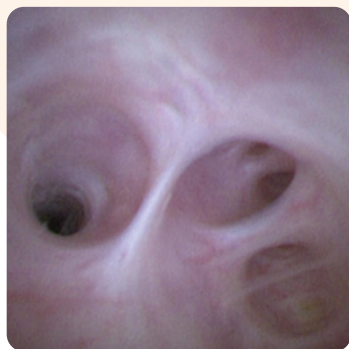
EFFICIENT IMAGE PROCESSING

- High-quality video image signal
- Easy to operate user interface
- Image enlargement up to 3x
- Adjustable display of the visualisation



EXCELLENT IMAGE QUALITY

The EYEMAX cholangioscope enables excellent high resolution image quality for improved visualisation of the bile and pancreatic ducts which can reduce the number of examinations.



HARNESS

FOR MAXIMUM USER COMFORT

- Ergonomic alternative for conventional secure fixing
- Relief during longer examinations as the weight of the cholangio- and duodenoscope do not have to be held in one hand
- One-hand operation of the cholangioscope guaranteed



Secure fixing is achieved by the anchor on the handle of the cholangioscope and attachment to the harness.



The cholangioscope is latched and secured to the harness to enable one-hand operation.

COMPATIBLE ACCESSORIES

FOR SUCCESSFULL PROCEDURES AND OUTCOMES



- Large working channel with 1.2 mm or 2.0 mm diameter for conclusive samples and easier sampling
- Easy insertion of forceps even with a bent endoscope due to the short, rigid distal end of the forceps
- In addition to the irrigation channels, fluids can also be injected via the working channel

SPECIFICATIONS

PERORAL	REF	max. catheter Ø mm		Working channel Ø mm		Working length mm		
	CHOLANGIOSCOPES PERORAL							
	CDS11006	3.9		2.0		2200		
	CDS22006	3.2		1.2		2200		
	Packing unit: 1 piece							
	REF	min. working channel Ø mm	Length mm	Opening width mm	Jaw Ø mm	Spike	Covering	Type
	ACCESSORIES (FORCEPS) PERORAL							
	BF10006	1.1	2900	3.0	1.0	Without	PTFE	Alligator
	BF16006	1.8	2900	4.5	1.6	Without	PE	Alligator
	Packing unit: 2 pieces							

PERCUTANEOUS	REF	max. catheter Ø mm		Working channel Ø mm		Working length mm		
	CHOLANGIOSCOPES PERCUTANEOUS							
	CDS11005	3.9		2.0		650*		
	CDS22005	3.2		1.2		650*		
	Packing unit: 1 piece							
	REF	min. working channel Ø mm	Length mm	Opening width mm	Jaw Ø mm	Spike	Covering	Type
	ACCESSORIES (FORCEPS) PERCUTANEOUS							
	BF10001	1.1	1200	3.0	1.0	Without	PTFE	Alligator
	BF16001	1.8	1200	4.5	1.6	Without	PE	Alligator
	Packing unit: 2 pieces							

* Please note: The harness is not suitable for 650 mm cholangioscopes.

REF	Sterilization	Frequency of use
HARNESS		
409501002	EO treated	Single use only

Packing unit: 1 piece

REF	Interfaces	Dimensions (LxWxH) mm	Power supply	Weight
PROCESSOR				
BS-W-100	DVI-D, Composite	355 x 297 x 107	230V	6 kg

CABLE**

996-17913-0300	DVI-cable	L 3000
996-17907-0300	BNC-cable	L 3000

Packing unit: 1 piece

** Please note: when ordering a processor, please specify both cables.

REF	Country
POWER CORD***	
BS100-TYPE D	Algeria, Angola, Egypt, Iraq, Lebanon, Libya, Morocco, Mozambique, Oman, South Africa, Sudan
BS100-TYPE G	Great Britain, Ireland, Jordan, Kenya, Kuwait, Malta, Qatar, Saudi Arabia, Uganda, United Arab Emirates
BS100-TYPE H	Israel, Palestine
BS100-TYPE J	Switzerland
BS100-TYPE K	Denmark
BS100-TYPE L	Italy, Syria

Packing unit: 1 piece

*** Please note: Choose the correct power cord for your country when ordering. For other countries the type E power cord is already included.

