



**BIOPSY**  
**FORCEPS AND BRUSHES**



# DISPOSABLE BIOPSY FORCEPS

## WHERE TECHNOLOGY AND RELIABILITY MEET

The biopsy forceps are extraordinarily sharp, which guarantees safe and effortless removal of significant tissue specimens. The CamDesign of our TechBite™ requires only very gentle contact pressure for a very good biopsy. The shortened distal end goes easy on the working

channel, even in angled positions. This is always guaranteed by the fully-mechanized production system used to manufacture TechBite™. With its classic shear joints, the TruBite combines easy handling with reliable quality.

### SPECIFIC CHARACTERISTICS

- Significant biopsies
- A design that goes easy on the working channel
- Short distal end: 9 mm (TechBite™), 11.5 mm (TruBite)
- Wide product range



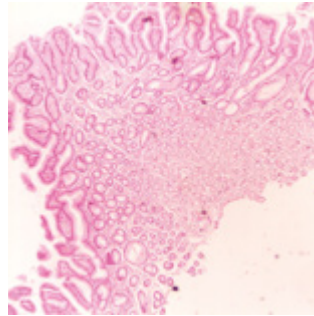
Cam-Design (Fig. TechBite™)



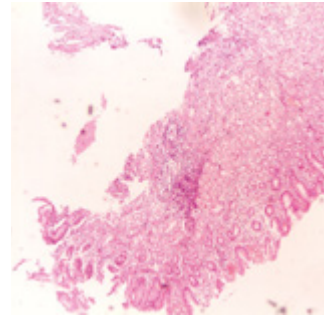
Scissors joint (Fig. TruBite)

### CONVINCING IN PRACTICAL USE

All of our forceps are equipped with a polyethylene coating. The labels can be consulted at any time for information regarding the withdrawal of the biopsy forceps.



Biopsate removed with a toothed cutting edge



Biopsate removed with a smooth cutting edge



### HANDLE AVAILABLE AS 1-RING VERSION

All forceps are equipped with the 1-ring handle. This allows you to use a one-hand grip method.

### JAW SECTIONS FOR EVERY INTERVENTION

Whether for biopsies or for removal of small polyps – the disposable biopsy forceps are perfectly equipped for any task with different jaw sections: with a smooth or a toothed cutting edge, with or without a spike.



### HIGH QUALITY COATING

The coating protects the working channel against scratching and provides a frictionless feed motion. The colored marking shows the removal of the forceps from the working channel in order to prevent damage to the mucous membrane. The forceps have been given different colors so they can be quickly allocated in accordance with working length:

Blue: 2300 mm or 2600 mm

Orange: 1800 mm

Yellow: Pediatric 1800 mm or 2600 mm

## SELECTION OF MORE THAN 30 BIOPSY FORCEPS

The broad range includes forceps of various sizes, and with differing features. An extract from the portfolio can be found below, while page five (5) offers a complete overview.

### TECHBITE™



Jaw Ø 2.3 mm,  
180 cm length



Jaw Ø 2.3 mm,  
230 cm length

### TRUBITE



Jaw Ø 2.3 mm,  
180 cm length



Jaw Ø 2.3 mm,  
230 cm length

## SPECIAL FORCEPS

### TECHBITE™ PAEDIATRICS



Jaw Ø 1.8 mm,  
180 cm length

### MACRO



Jaw Ø 3.0 mm,  
230 cm length

### TRUBITE PAEDIATRICS



Jaw Ø 1.8 mm,  
180 cm length

### LARGE CAPACITY



Jaw Ø 2.4 mm,  
180 cm length



Jaw Ø 2.4 mm,  
180 cm length

## SPECIFICATIONS

REF	Working channel Ø mm	Length mm	Opening width mm	Jaw Ø mm	Spike	T-Block	Covering	Jaw	Grip
<b>TECHBITE™</b>									
EBF33-11023180	2.8	1800	6.7	2.3	No	Yes	Orange	Smooth	1-ring
EBF33-11023230	2.8	2300	6.0	2.3	No	Yes	Blue	Smooth	1-ring
EBF33-11123180	2.8	1800	6.7	2.3	Yes	No	Orange	Smooth	1-ring
EBF33-11123230	2.8	2300	6.7	2.3	Yes	No	Blue	Smooth	1-ring
EBF43-11023180	2.8	1800	6.7	2.3	No	No	Orange	Serrated	1-ring
EBF43-11023230	2.8	2300	6.7	2.3	No	No	Blue	Serrated	1-ring
EBF43-11123180	2.8	1800	6.7	2.3	Yes	No	Orange	Serrated	1-ring
EBF43-11123230	2.8	2300	6.7	2.3	Yes	No	Blue	Serrated	1-ring
<b>TRUBITE</b>									
EBF53-11023180	2.8	1800	6.7	2.3	No	No	Orange	Smooth	1-ring
EBF53-11023230	2.8	2300	6.7	2.3	No	No	Blue	Smooth	1-ring
EBF53-11123180	2.8	1800	6.7	2.3	Yes	No	Orange	Smooth	1-ring
EBF53-11123230	2.8	2300	6.7	2.3	Yes	No	Blue	Smooth	1-ring
EBF63-11023180	2.8	1800	6.7	2.3	No	No	Orange	Serrated	1-ring
EBF63-11023230	2.8	2300	6.7	2.3	No	No	Blue	Serrated	1-ring
EBF63-11123180	2.8	1800	6.7	2.3	Yes	No	Orange	Serrated	1-ring
EBF63-11123230	2.8	2300	6.7	2.3	Yes	No	Blue	Serrated	1-ring
<b>SPECIAL FORCEPS</b>									
<b>TECHBITE™ – PAEDIATRICS</b>									
EBF33-11018180	2.0	1800	4.5	1.8	No	No	Yellow	Smooth	1-ring
EBF43-11018180	2.0	1800	4.5	1.8	No	No	Yellow	Serrated	1-ring
EBF43-11118180	2.0	1800	4.5	1.8	Yes	No	Yellow	Serrated	1-ring
<b>TRUBITE – PAEDIATRICS</b>									
EBF53-11018180	2.0	1800	4.5	1.8	No	No	Yellow	Smooth	1-ring
EBF53-11118180	2.0	1800	4.5	1.8	Yes	No	Yellow	Smooth	1-ring
EBF13-11018180	2.0	1800	4.5	1.8	No	No	Yellow	Serrated	1-ring
EBF13-11118180	2.0	1800	4.5	1.8	Yes	No	Yellow	Serrated	1-ring
<b>TRUBITE – ENTEROSCOPY</b>									
EBF03-11018260	2.0	2600	4.5	1.8	No	No	Yellow	Smooth	1-ring
EBF03-11023260	2.8	2600	6.7	2.3	No	No	Blue	Smooth	1-ring
<b>TRUBITE – MACRO</b>									
EBF03-01030230	3.2	2300	8.5	3.0	No	No	Blue	Smooth	1-ring
EBF03-01130230	3.2	2300	8.5	3.0	Yes	No	Blue	Smooth	1-ring
EBF13-01030230	3.2	2300	8.5	3.0	No	No	Blue	Serrated	1-ring
EBF13-01130230	3.2	2300	8.5	3.0	Yes	No	Blue	Serrated	1-ring
<b>LARGE CAPACITY</b>									
LCEBF63-10024180	2.8	1800	9.0	2.4	No	No	Orange	Serrated	1-ring
LCEBF63-10024230	2.8	2300	9.0	2.4	No	No	Blue	Serrated	1-ring
LCEBF63-10124180	2.8	1800	9.0	2.4	Yes	No	Orange	Serrated	1-ring
LCEBF63-10124230	2.8	2300	9.0	2.4	Yes	No	Blue	Serrated	1-ring

Packaging unit: 10 pieces



# HOT BIOPSY FORCEPS

## REMOVE BIOPSIES AND STOP BLEEDING

MICRO-TECH unites several therapeutic working steps with its practical 2-in-1 solution. On one hand, the hot biopsy forceps serve as conventional hot forceps, removing small colonic polyps precisely and safely in active mode while taking diagnostically conclusive tissue samples in non-active mode. On the other hand, they serve as an

urgent measure for stopping bleeding, since the smallest lesions can be closed again at any time via coagulation. In this respect, MICRO-TECH's hot biopsy forceps suitability for treating patients with increased risk of bleeding is unparalleled.

### SPECIFIC CHARACTERISTICS

- Very comfortable to use
- High quality riveted scissors joints
- Puncture-proof PTFE insulation
- 3-ring handle with Olympus-HF-connection
- Excellent cutting properties



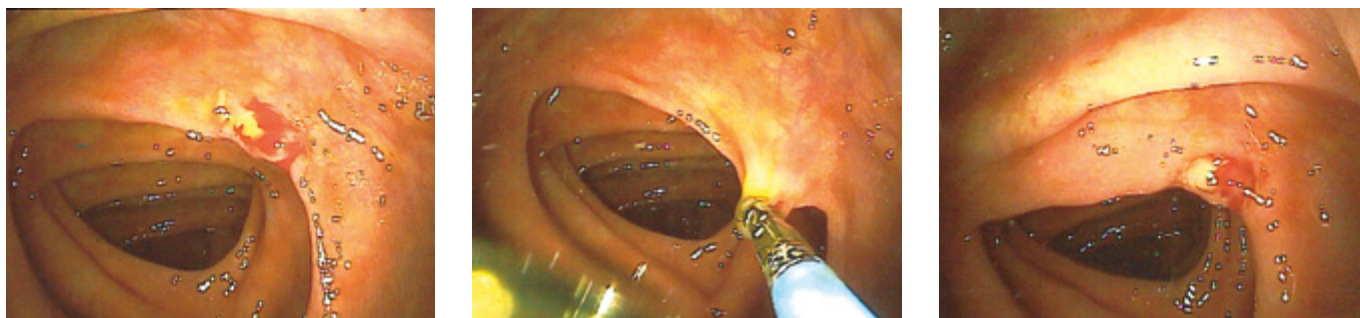
HF-connection



Scissors joint

## SUCCESSFUL IN PRACTICAL USE

The hot biopsy forceps from MICRO-TECH are particularly suitable for use in patients with an increased risk of bleeding. If bleeding occurs during tissue sampling or polyp removal, this can be treated immediately and stopped via coagulation current.



Hot biopsy forceps in endoscopic use



## TARGET-ORIENTED USE OF POWER

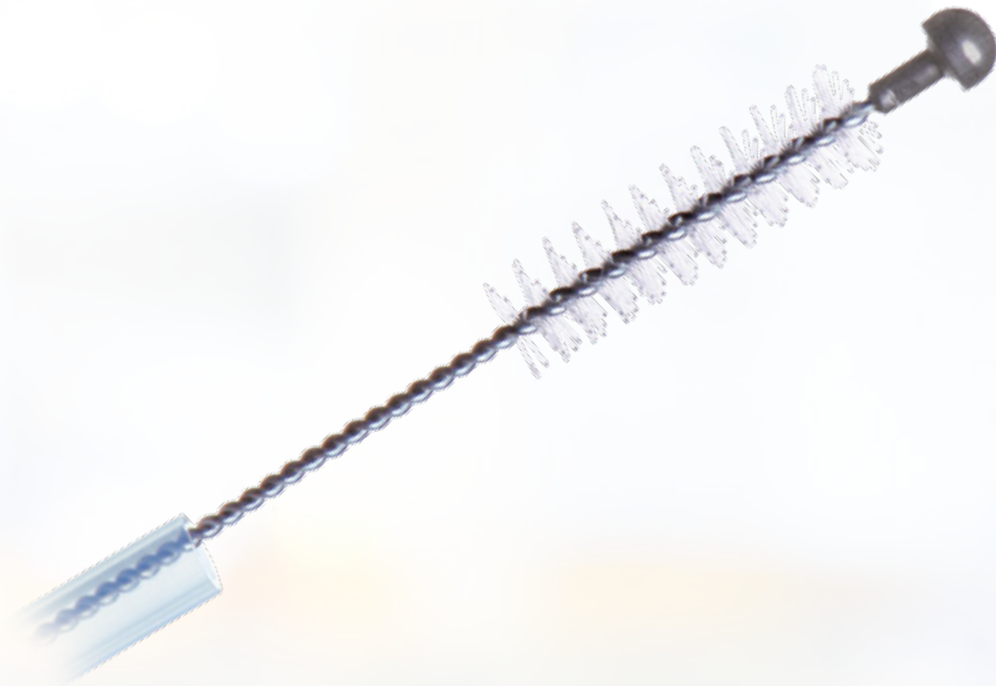
The 3-ring handle is equipped with a universal HF-connection for safe and controlled power supply. The PTFE insulation of the metal coil is impact-resistant and prevents current conductive contact with the tissue.

## SPECIFICATIONS

REF	Ø mm	Length mm	Spike	Insulated	Jaw
<b>HOT-BIOPSY FORCEPS WITH COATING</b>					
HBF05-11018120	1.8	1200	No	Yes	Standard
HBF05-11018180	1.8	1800	No	Yes	Standard
HBF05-11023180	2.3	1800	No	Yes	Standard
HBF05-11023230	2.3	2300	No	Yes	Standard

Packaging unit: 10 pieces





# CYTOLOGY BRUSHES

## THE SOLUTION FOR EASY AND SAFE CYTOLOGIC SMEARS

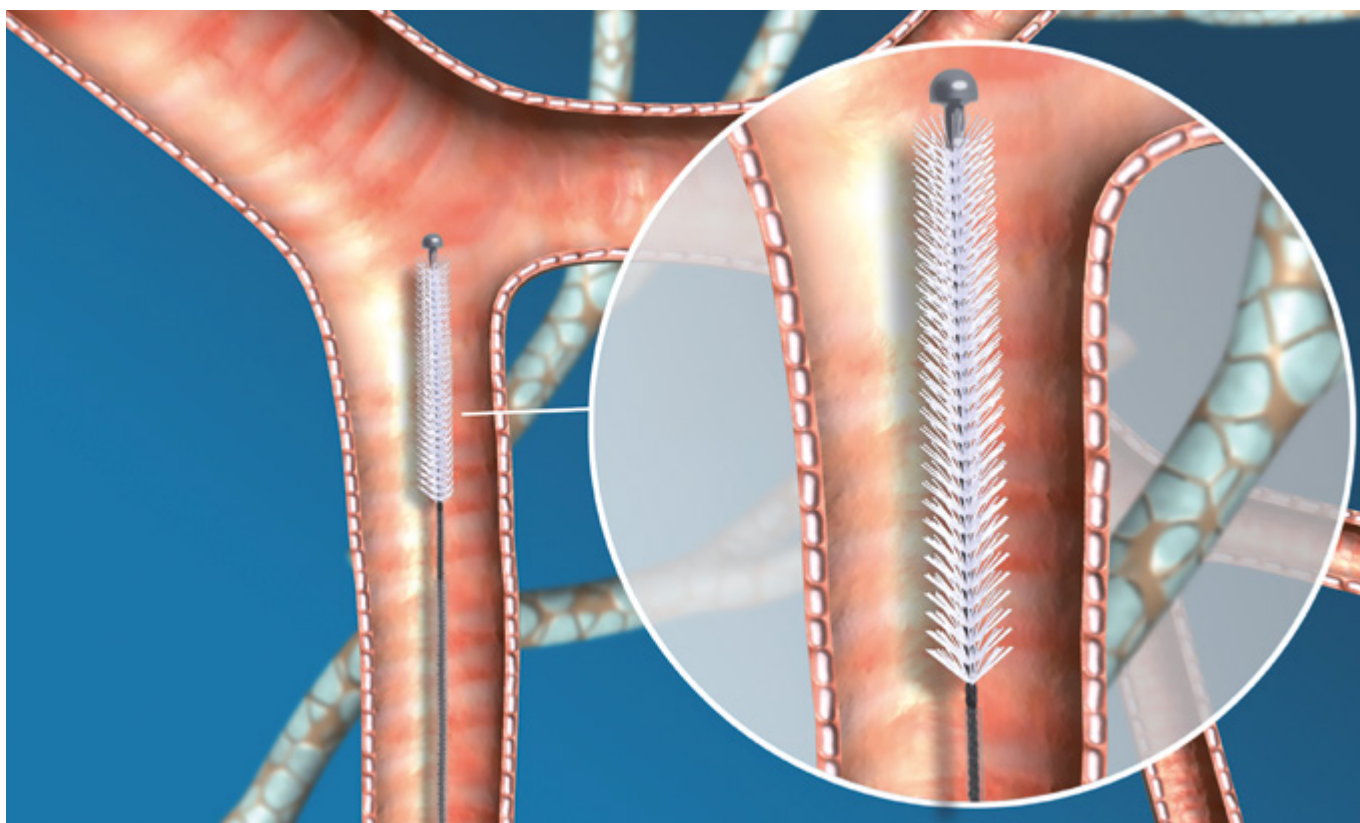
One established method of acquiring cell specimens consists of taking cytologic smears with cytology brushes: MICRO-TECH makes cytologic smearing efficient and safe, owing to a series of cytology brushes which are especially adapted to clinical requirements. The MICRO-TECH cytology brush can be push forward easily to the desired

site through the endoscope. The thin bristles enable a tissue-sparing cytologic smear. The plastic tube and the distal ball for closure protect the tissue sample when the device is retracted. A potential contamination of the sample or even a loss of sample is thus excluded.

### SPECIFIC CHARACTERISTICS

- Thin bristles for an optimal collection of cells
- Includes a plastic tube and a metal “ball shaped” head for tight closure
- For endoscopes with a minimum working channel diameter of 2.0 mm
- Sterile single packaging





### SAFE AND CONTROLLED INTRODUCTION

By using MICRO-TECH cytology brushes, you can access lesions that are hard to reach, easily and safely. The ergonomically shaped 3-ring handle also gives the user a secure and comfortable grip. Every movement is conveyed to the brush head, directly and with precision.



Ergonomically handle

### COMPREHENSIVE RANGE OF PRODUCTS

MICRO-TECH offers a great variety of cytology brush models which are suited for many application fields and comply with clinical specifications.

## SPECIFICATIONS

REF	Brush Ø mm	Length mm	Catheter Ø mm
<b>SINGLE-USE CYTOLOGY BRUSH</b>			
CYB-24S-12C	2.4	1200	1.8
CYB-30S-12C	3.0	1200	1.8
CYB-30S-24C	3.0	2400	2.3
CYB-40S-12C	4.0	1200	1.8

Packaging unit: 20 pieces

# NOTES





