



ELBLANDKLINIKUM  
RIESA

GANZ NAH BEI MIR

## REGISTRATION & PARTICIPATION FEE

**Participation fee:** € 300.00 per person

**Please register per e-mail** at the office of the Clinic for

Internal Medicine:

Mandy Richter

E-Mail: [mandy.richter@elblandkliniken.de](mailto:mandy.richter@elblandkliniken.de)

## VENUE

ELBLANDKLINIKUM Riesa

Conference room level 6 and central endoscopy

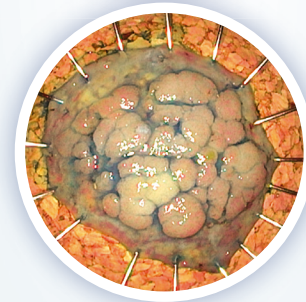
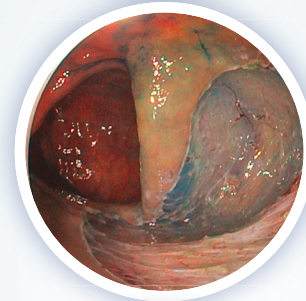
Weinbergstraße 8

01589 Riesa | Germany

## ACKNOWLEDGEMENT

Continuing education points have been applied for at the SLÄK.

## ROUTE



## WORKSHOP ENDOSCOPIC SUBMUCOSAL DISSECTION

14 – 17 January 2026

Elblandklinikum Riesa, Germany

[WWW.ELBLANDKLINIKEN.DE](http://WWW.ELBLANDKLINIKEN.DE)

Dear Colleagues,

We are pleased to invite you to our fourth practical workshop on Endoscopic Submucosal Dissection (ESD), with a main focus on colorectal ESD. The aim of the course is to provide practical skills and share useful tips for those starting to perform ESD or looking to expand their experience.

This year, the program has been extended to four days. The first three days will feature live demonstrations of ESD cases in our endoscopy unit, with two procedures per day and time for discussion of each case. Participants are welcome to attend one, two, or all three of these days. On the final day, participants will train on swine stomach and colon models. Topics covered will include indications for ESD, instruments and accessories, basic techniques, and pathological assessment of specimens.

Participation is limited to small groups to ensure a high level of hands-on practice. The participation fee is 300 Euro.

ELBLANDKLINIKUM Riesa is located near Dresden, a city of rich cultural heritage, and Meissen, known for its medieval castle and world-famous porcelain. We encourage you to enjoy the local attractions during your stay.

For registration and further details, please contact:  
[mandy.richter@elblandkliniken.de](mailto:mandy.richter@elblandkliniken.de)

We look forward to seeing you in Riesa.

## PROGRAM

### DAY 1 – 14 January 2026

- 08:00 – 08:10**    **Welcome & Introduction**  
Dr. Petr Sergeev
- 08:10 – 08:40**    **Indications for ESD in Colorectal Lesions**  
Dr. Petr Sergeev
- 09:00 – 13:00**    **Live Demonstrations & Case Discussion**
- 13:30 – 14:30**    **Colonc ESD Devices**  
Dr. Mariia Nedoshitova

### DAY 2 – 15 January 2026

- 09:00 – 13:00**    **Live Demonstrations & Case Discussion**
- 13:00 – 15:00**    **Hands-on Training with Swine Models**

### DAY 3 – 16 January 2026

- 09:00 – 13:00**    **Live Demonstrations & Case Discussion**
- 13:30 – 14:00**    **Basics of Colorectal ESD Technique**  
Dr. Igor Ehrmann
- 19:00 – 21:00**    **Get-together**  
(venue to be announced)

### DAY 4 – 17 January 2026

- 09:00 – 09:30**    **Challenges in Detecting Early GI Neoplasia**  
Dr. Hendrik Strebel
- 09:30 – 10:00**    **Pathological Assessment of ESD Specimens**  
Dr. Steffen Kellermann
- 10:00 – 14:00**    **Hands-on Training with Swine Models**